

CertifySIS™

Data Certification for SASI Migration

CertifySIS allows you to quickly and pro-actively identify errors and problems in your district's SASI data, ensuring the quality of data before it is migrated to your new student information system.

What is CertifySIS?

CertifySIS is a web-based data certification service designed specifically for school districts that are migrating their SASI data to a new student information system – no matter which new system the district is transitioning to.

CertifySIS allows you to quickly and pro-actively identify errors and problems in your district's SASI data, ensuring the quality of data before it is migrated to your new student information system.

Why does my district need CertifySIS?

Data migration is usually the single most challenging aspect of transitioning to a new student information system. Inaccurate, inconsistent and incomplete data in a district's current student system can compromise the integrity of the new system, if data problems are not properly identified, cleaned up and reconciled prior to migration.

Data problems can elongate the time required to implement a new student information system – by requiring multiple cycles of data extraction, transformation and loading – so it always makes sense to clean up data well before you move it.

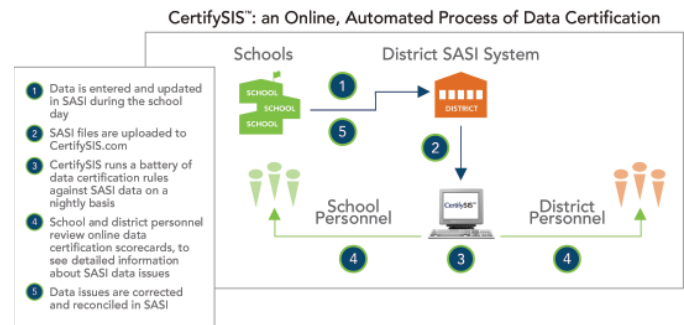
Regardless of which new student information system your district chooses to replace SASI, having a definitive understanding of potential problems in your source data will save time and resources during the migration process – and ensure the rapid adoption and usability of your new system.

How does CertifySIS work?

1. CertifySIS is a hosted software application that periodically runs a battery of data certification rules, called an "observation," against your SASI data to check for data that is missing, invalid or otherwise expected to jeopardize the success of your data migration. The SASI data certification rules used in CertifySIS have been configured jointly by Certica Solutions and SASI-user districts across the nation, and is constantly growing as a result of feedback from these districts.
2. Authorized school and/or district personnel, such as program coordinators and school data clerks, login to CertifySIS.com to see their own, personalized data certification scorecard – for just the data in their purview. For example, a registrar at the Maple Elementary School in the Lewiston School District will see only student, teacher and school data for that particular school.

3. The CertifySIS data certification scorecards:
 - a) quantify the level of data errors; and
 - b) provide highly detailed “drill-down” information about the actual SASI records that violate the rules.

The data certification scorecards are accessible online to your authorized users and are refreshed daily.
4. Once data issues are reviewed using the scorecard, they can then be expediently researched, reconciled and corrected in SASI. Problematic records which have been corrected or reconciled in SASI will not show on the scorecard when the next observation is run.



What data areas does CertifySIS address?

CertifySIS certifies these data areas in these SASI tables using these types of validations.
<ul style="list-style-type: none"> • Student demographics • Student enrollment • Teacher information • Credits • Courses • Course history • Schedules • Relation information • Discipline • English proficiency 	ASTU, ACHS, ACRS, ACLH, ACLS, AMST, ADIS, APRN, ATCH, ADPO, AADD, ATBL, AGRD, AGRL, AATC	<ul style="list-style-type: none"> • Codes • Dates • Text formats • Numeric data • Calculations • Cross-table logic • Reference table look-ups • Date sequences • Multi-field conditions • Business rules

Following are just a few examples of the more than one hundred data certification rules that CertifySIS currently runs against SASI data:

SASI Tables and Fields		CertifySIS Data Certification Rule
ASTU	ENTERDATE	Enter Date and Leave Date must both be weekdays.
ASTU	HOMELESS	Homeless students must be enrolled in the Free and Reduced Lunch program.
ASTU	CREDATMPT	For grades 9–12, Credits Attempted must be >= Credits Earned.
ASTU	ORIGYRGRAD	For grades 1–12, Original Graduation Year should be within 1 year of expected graduation year for current grade.
ASTU_DISCIPLINE	REPORTDATE	For grades 9-12, every incident should have a date, description, code, refer date and referred by.
ATCH	TCHNUM	Each Teacher Number should be assigned to just one staff person per school.

Can our district add SASI data certification rules to CertifySIS?

In addition to the more than one hundred data certification rules currently in CertifySIS, Certica Solutions plans to add at least ten new rules each week, and seeks input from district subscribers about which rules would provide the most value to you and other districts. Rule enhancements will be prioritized and implemented based on their value to the greatest number of districts.

How do I get started with CertifySIS?

1. Once your district subscribes to CertifySIS, you decide which individuals and which schools in your district should receive SASI data certification scorecards, e.g., program directors, school data clerks. This information is communicated to Certica Solutions via a confidential survey form.
2. Certica conducts a weekly, hour-long training and orientation sessions via webinar to provide district recipients of the SASI data certification scorecards with information on how to login, access and use the CertifySIS scorecards
3. You (or the appropriate person in your district) upload a copy of your SASI database (either dBASE files or a SQL Server backup) to the CertifySIS secure server. Ideally this is a scheduled process with a daily upload, so you can ensure that users' scorecards are frequently refreshed.
4. Once your data is uploaded and your users are set up in CertifySIS, the CertifySIS "observation" of data certification rules will run against your SASI data every night.

Regardless of which new student information system your district chooses to replace SASI, having a definitive understanding of potential problems in your source data will save time and resources during the migration process.

5. The individuals you've authorized can then access online, personalized data certification scorecards showing detailed school and student records that have violated the SASI data certification rules. These online data certification scorecards are available to users each day.
6. CertifySIS imparts an ongoing, cyclical process. As such, with each daily upload to the CertifySIS secure server, the observation is automatically run, and refreshed scorecards are available for your users.

For more information about how to get started with CertifySIS, go to CertifySIS.com or send an email to info@certicasolutions.com.

What does CertifySIS cost?

CertifySIS is licensed as a three-month subscription, so you can time your data clean-up efforts to precede your data migration activities – and continue certifying your changing SASI data right up until your new system implementation is complete. The cost to subscribe to CertifySIS is based on a district's student enrollment, and consists of a one-time set-up fee and a 3-month subscription fee, which can be renewed for successive 3-month periods.

Number of Students Enrolled	One-Time Set-Up Fee	3-Month Subscription	Total Initial Cost
Less than 4,000	\$1,000	\$1,000	\$2,000
4,001 – 8,000	\$1,250	\$1,750	\$3,000
8,001 – 12,000	\$1,500	\$2,500	\$4,000
12,001 – 15,000	\$1,750	\$3,250	\$5,000
More than 15,000	Contact Certica Solutions		

About Certica Solutions, Inc.

Certica Solutions provides compliance and accountability solutions for the K-12 education system. The company's data certification software, called Certify, enables education agencies to maximize funding, optimize regulatory reporting, and ensure compliance with education policies and mandates. Founded in 2001, Certica counts among its customers several state departments of education, educational service agencies, and numerous school districts nationwide.

Certica Solutions, Certify, the Certify logo, CertifySIS, and the CertifySIS logo are trademarks of Certica Solutions, Inc. All other trademarks noted herein are property of their respective owners.